

LITHOCHROME[®] Tintura[™] Stain

Water-Based Stain for Coloring Concrete Surfaces



COLOR CHART A- 422.06S



0510 Black



1406 Old Hickory



4663 Saxon Bronze



5050 Spanish Tile



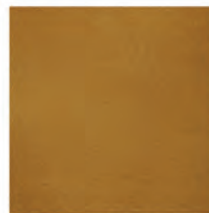
1750 Evergreen



2911 Meadow Green



1516 Devon Brown



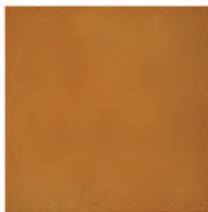
2047 Autumn Honey



4364 Razz-ma-tazz Red



2463 Kelly Green



1108 Bright Orange



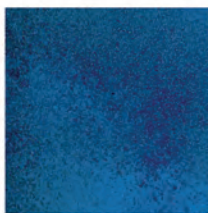
1122 Capri Teal



2004 Vivid Violet



2077 Mustard Yellow



5566 Zenith Blue



2055 Toucan Green



2433 Pink Dawn



6007 Wheat Grain



0289 Azure Blue



5131 Spring Green



6011 Whisper Pink



2610 Blue Haze



3950 Plum Parfait



2626 Light Gray

LITHOCHROME[®] Tintura[™] Stain is the environmentally friendly, low VOC waterborne stain formulated specifically to penetrate and bond with porous concrete or cementitious toppings.

LITHOCHROME Tintura Stain is a medium-duty coloring system that can produce bold, bright colors or subdued earth tones. When finished with the compatible sealer in an environment where regular maintenance will be performed, it is durable enough for floors, walls, columns and other decorative features.

For professional use only.

Custom-matched colors are also available.

Examples shown represent three coats of LITHOCHROME Tintura Stain applied over uncolored, medium gray concrete, then sealed with SCOFIELD[®] Selectseal Plus[™]. The color effects produced may differ significantly from that shown on the color chart. A representative test section should be prepared for each individual concrete surface prior to general application.

A somewhat translucent appearance is normal. The appearance of variation may be increased depending upon the evenness of the application technique. To reduce variations in color and increase opacity, a base coat of uncolored LITHOCHROME Tintura Stain may be applied, followed by one or two coats tinted with the chosen color.

For optimum performance, surfaces stained with LITHOCHROME Tintura Stain require initial application of a compatible sealer along with periodic maintenance and resealing. SCOFIELD Selectseal Plus is the preferred sealer for most uses.

See Tech-Data Bulletin A-424 for full details.



**SCOFIELD[®]
SYSTEMS**

www.scofield.com