

Abstract Concrete Dyes™ Over Grey Concrete



Raw Sienna AB 101



Turquoise AB 110



Chocolate AB 109



Citrus AB 115



Sepia AB 104



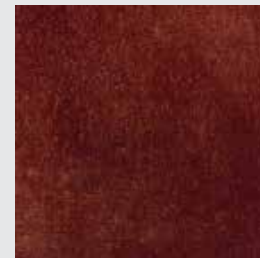
Black AB 116



Walnut AB 113



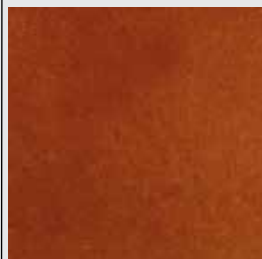
Terra Cotta AB 111



Mahogany AB 108



Green AB 106



Pumpkin AB 107



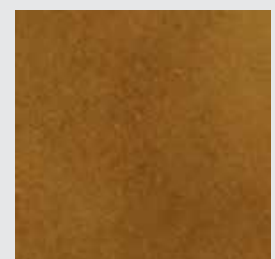
Sapphire AB 114



Dark Alder AB 112

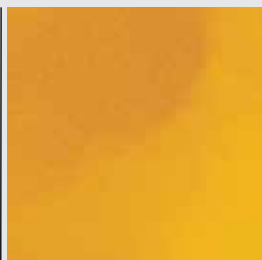


Gold AB 102



Caramel AB 105

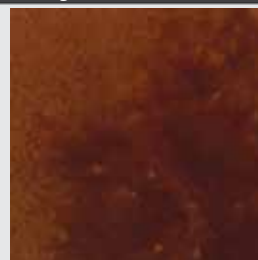
Abstract Concrete Dyes™ Over White Microtopping



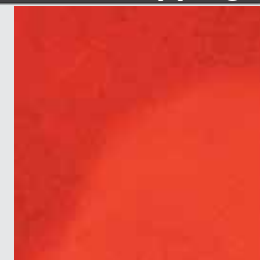
Raw Sienna AB 101



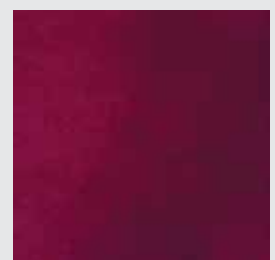
Turquoise AB 110



Chocolate AB 109



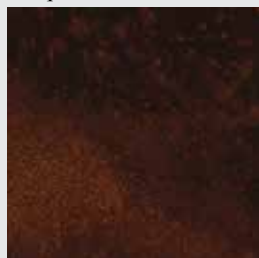
Citrus AB 115



Sepia AB 104



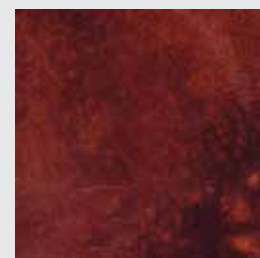
Black AB 116



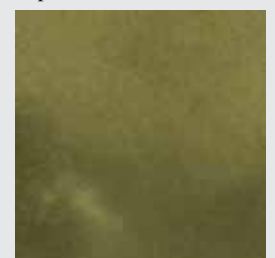
Walnut AB 113



Terra Cotta AB 111



Mahogany AB 108



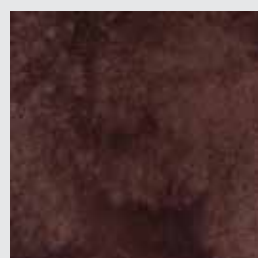
Green AB 106



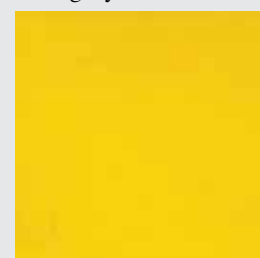
Pumpkin AB 107



Sapphire AB 114



Dark Alder AB 112



Gold AB 102



Caramel AB 105

General Information:

Abstract Concrete Dyes™ represent the very latest in professional concrete coloration technology. Formulated exclusively for use with HP Spartacote® coatings and sealers, these concentrated dyes are available in an ultra low voc solution which is capable of being diluted in either water, isopropanol alcohol or acetone. Unlike dye powder concentrates, Abstract Dyes™ are ready for immediate use in a variety of decorative concrete applications. These products are intended to be used in conjunction with Sparta-Flex® Gloss and Lo Gloss sealers offered by HP Spartacote®. They can also be applied directly to prepared concrete, polished concrete or polymer modified overlays. Abstract Dyes™ create exceptional translucent color effects that are similar to reactive concrete stains. Available in 15 different colors with unlimited versatility, Abstract Dyes™ offer a viable solution for an array of decorative concrete projects.

Features & Benefits

- Deeply penetrates and resides in the microscopic voids and substrate structure of properly prepared concrete and overlay surfaces.
- Abstract Concrete Dyes™ are a viable alternative to traditional reactive stains, for projects when a larger color palette or ease of installation is required.
- Abstract Concrete Dyes™ are also ideal for polished concrete due to depth of penetration.
- Abstract Concrete Dyes™ can be utilized in conjunction with all HP Spartacote® products as a coloration tool in the production of concrete flooring and pre-cast elements.
- Abstract Concrete Dyes™ are manufactured as a VOC compliant liquid concentrate. It is designed to be diluted with a non aromatic or aliphatic solvent like water, acetone, or isopropyl alcohol - or a combination of those.

For Professional Use Only

Thoroughly read all technical data sheets, application guidelines, warranty disclaimers and msds sheets prior to use. Application guides depending on the dye system employed are available at www.hpspartacote.com.

Packaging

5 oz and 25 oz liquid concentrate containers. Abstract Dye™ must be mixed with either water, acetone or isopropyl alcohol prior to application.

Pre-Application

HP Spartacote, Inc. utilizes the International Concrete Repair Institute (ICRI) Concrete Surface Profile (CSP) standards for specifying finished surface roughness prior to applying Abstract Concrete Dyes™. When applied direct to concrete, the concrete must be a minimum #1 according to the ICRI CSP chart. Contact the ICRI at www.ICRI.org or HP Spartacote, Inc. for more information on these surface profiles.

The following liquids are recommended to use for diluting Abstract Concrete Dyes™:

Acetone - Short dwell time, with consistent color. Will penetrate fairly dense concrete surfaces.

Isopropyl Alcohol - Medium dwell time, with consistent color.

Water - Long dwell time, with increased marbling. Surface needs to be porous.

Coverage Rates:

Coverage rates may vary greatly depending on substrate porosity, substrate color and dilution utilized to achieve desired final appearance. Material usage is approximately 500 square feet per gallon.

Mixing:

Mix the entire contents of the 5 oz. dye concentrate with one (1) gallon of the desired liquid diluent. Mix the entire contents of the 25 oz. dye concentrate with 5 gallons of the desired liquid.

Drying times can be dramatically affected by temperature and humidity if diluted with water rather than acetone. Application must be made to concrete with a temperature higher than 50°F and maintained at this temperature or above for a minimum of 4 hours after application. Typical dry time is 30 seconds to 30 minutes at 70°F and 50% relative humidity. Dry times are also dependent upon the water or solvent carrier ratios.

Application:

Always complete a job site sample. Abstract Concrete Dye™ are best applied with an airless backpack pump-up sprayer or good quality solvent-resistant sprayer. Apply Abstract Concrete Dye™ in light spray applications. Once the subsequent dye application has dried, additional light applications of the same color or other colors can be put down to build color depth or create marbling effects.

If using recommended Sparta-Flex® sealers by HP Spartacote®, maintain a maximum 100-grit level profile to allow for optimal sealer adhesion and durability.

Note: An appearance similar to polished and stained concrete (HP Spartacote Sparta-Stain™) can be achieved by utilizing Abstract Concrete Dye™ over concrete ground to a "full sand cross section exposure," stopping at the 100-grit round segment metal bond level and then sealing with HP Spartacote® Sparta-Flex® clear sealer.

Disclaimer:

The colors on this card are approximate and resemble actual colors as closely as possible under natural light. The condition of the concrete, finishing techniques and other variables will all impact final color. A pre-construction sample for color accuracy is always recommended. Information located within this document is true and accurate to the best of our knowledge. HP Spartacote, Inc. disclaims any itself from any liability incurred in connection with the use of our products.

Offered / Distributed by:



HP Spartacote, Inc
810 Brickyard Circle #1
Golden, CO 80403
866-966-1DAY(1329)
www.hpspartacote.com